

**OLYMPUS**<sup>®</sup>

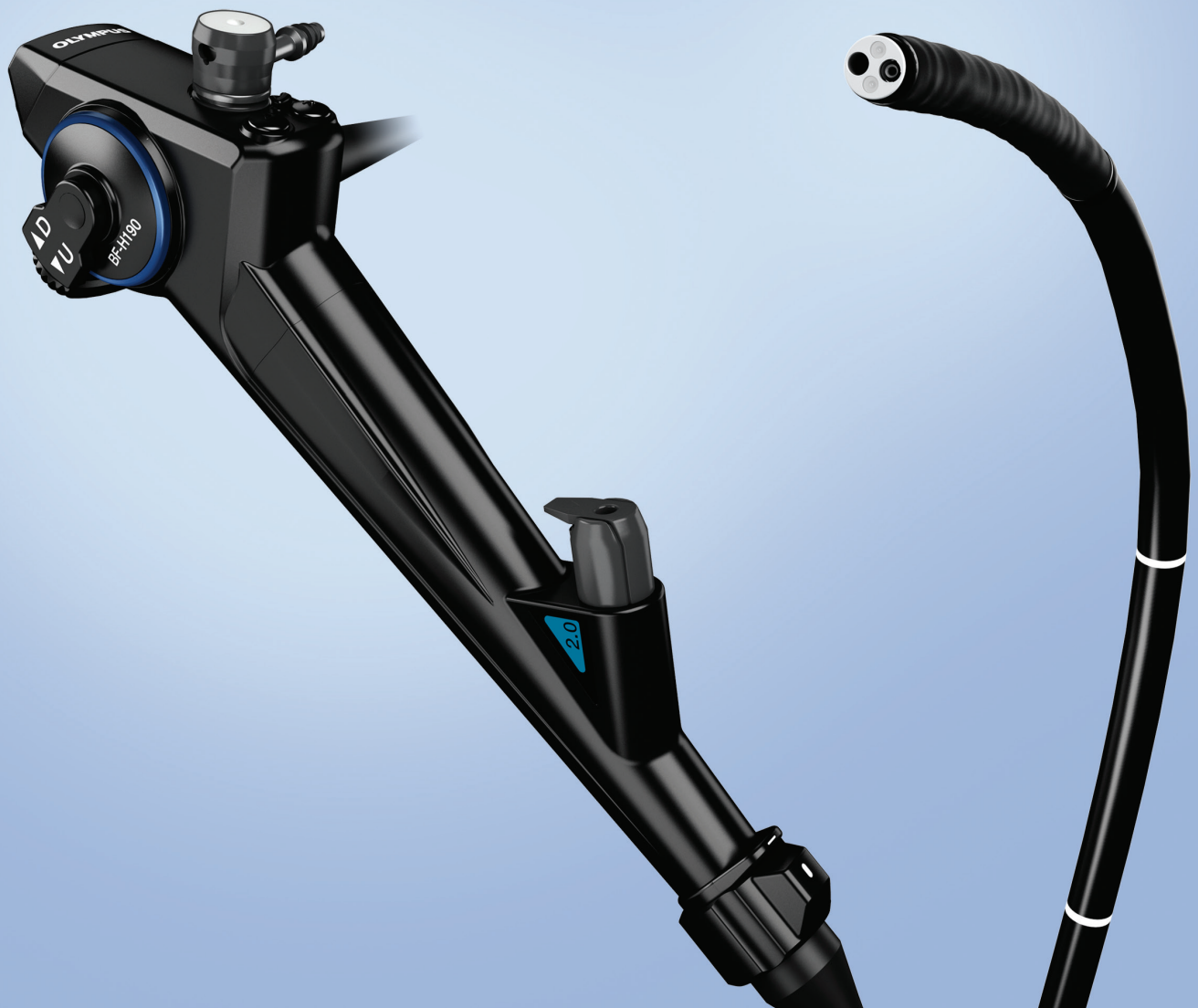
Your Vision, Our Future

**EVIS EXERA III**

EVIS EXERA III BRONCHOSCOPE

**BF-H190**

Fully rotatable, diagnostic bronchoscope with superb HDTV image quality.





# EVIS EXERA III BRONCHOSCOPE OLYMPUS BF-H190

The revolutionary design of the BF-H190 bronchoscope, powered by EVIS EXERA III, advances diagnostic bronchoscopy with outstanding handling, improved functionality, and unmatched image quality.

## Advancing Maneuverability

With outstanding handling and unmatched tracheobronchial access

**Rotary Function:** Insertion tube rotation of up to 120° left and right effectively reduces hand torque by 82%\* and supports easier insertion and positioning of endoscopic devices.

**210° Tip Angulation:** The wide angulation range can be maintained even when an endoscopic device is inserted, making it easier to access difficult-to-reach areas.

**Waterproof One-touch Connector:** A simple one-touch connector minimizes the effort required for set up, and its fully submersible design eliminates the need for a water-resistant cap.



\*When compared to standard Olympus bronchoscopes (data on file).

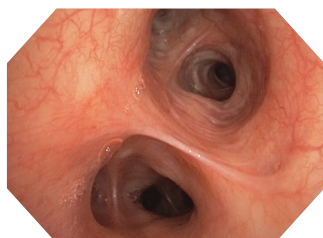
## Advancing Visualization

With HDTV for clearer, brighter imaging

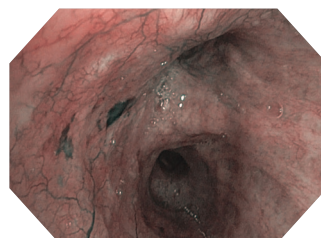
**HDTV:** The brighter, crystal clear images delivered by true HDTV enable more detailed observation of bronchial surfaces during bronchoscopy.

**Electronic Magnification:** Close-up observation of bronchial surfaces is readily available with 1.2 x and 1.5 x electronic magnification.

**Narrow Band Imaging (NBI):** Now significantly brighter compared to previous generation scopes, NBI provides twice the viewable distance for enhanced visualization of vascular structures and mucosal morphology.



HDTV



NBI

## Advancing Versatility

With compatibility across multiple specialties

**EVIS EXERA III:** The power of EVIS EXERA III expands across the hospital to enable equipment standardization and simplified support and service, with the ultimate goal of lowering the total cost of equipment ownership.

**Endoscopic Devices:** A full array of Olympus bronchoscopy devices are available and designed to deliver superior performance while minimizing channel damage, thereby potentially reducing repair costs and extending endoscope life.

## Specifications

Optical System	Field of view	120°	
	Direction of view	Forward viewing	
	Depth of field	3-100 mm	
	Image quality	HDTV	
Insertion Tube	Distal end outer diameter	5.5 mm	
	Distal end enlarged		
	Insertion tube outer diameter	5.1 mm	
	Working length	600 mm	
	Rotary Function	Yes	
	Instrument Channel	Channel inner diameter	2.0 mm
		Minimum visible length	3.0 mm from the distal end
		Direction from which endoscopic devices enter and exit the endoscopic image	
	Bending Section	Angulation range	
Electrocautery Instrument Compatibility	Yes		
Laser Compatibility	Nd: YAG, 810 nm diode		
Compatible EVIS EXERA System	Video system center	Olympus CV-190	
	Xenon light source	Olympus CLV-190	

Olympus is a registered trademark of Olympus Corporation, Olympus America Inc., and/or their affiliates.

**OLYMPUS**

**OLYMPUS AMERICA INC.**  
3500 Corporate Parkway, PO Box 610, Center Valley, PA 18034

For more information, contact your local Olympus sales representative, or call 800-848-9024.  
[www.medical.olympusamerica.com](http://www.medical.olympusamerica.com)

©2013 Olympus America Inc. All rights reserved.  
Printed in USA OAIRES1013BRO11918