

**OLYMPUS**<sup>®</sup>

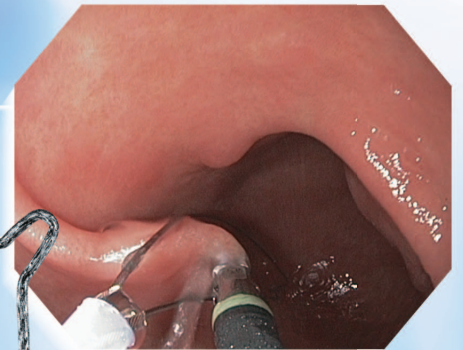
Your Vision, Our Future

EVIS EXERA II GASTROINTESTINAL VIDEOSCOPE

**OLYMPUS GIF TYPE 2TH180**

EVIS  
**EXERA II**<sup>™</sup>

*Exceptional dual-channel treatment capability combined with today's most powerful imaging performance*





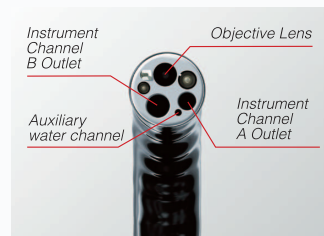
Take advantage of innovative imaging functions and dual-channel versatility supported by HDTV picture quality

Now incorporating two instrument channels in a slimmer-than-ever design, this versatile scope helps you realize the full potential of therapeutic endoscopy. Compatible with the astonishing realism of HDTV images and featuring the latest in advanced imaging functions such as Close Focus and Narrow Band Imaging™, the GIF-2TH180 is the ideal tool for expanding the range of endoscopic treatment.



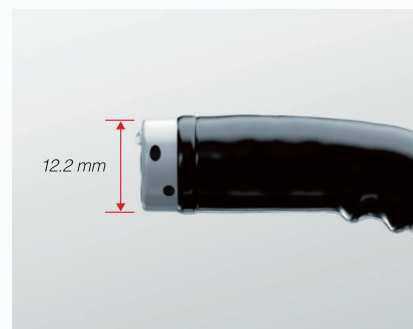
#### ■ Dual channel design

A versatile dual-channel design featuring one 3.7 mm diameter channel and one 2.8 mm diameter channel allows the GIF-2TH180 to accommodate two endotherapy accessories simultaneously or to use one channel for an endotherapy accessory and the other for suction. And since the water pumped out for flushing by the auxiliary water function now comes from around the 6 o'clock position in the field of view, you'll get a clearer overall view and be able to manipulate devices more easily.



#### ■ Slim design to facilitate insertion

The distal end of the GIF-2TH180 measures just 12.2 mm across—a full 1 mm narrower than its predecessor, while the insertion tube has a diameter of 12.6 mm. Although equipped with two channels and an HDTV image sensor, this scope provides first-class insertion capability.

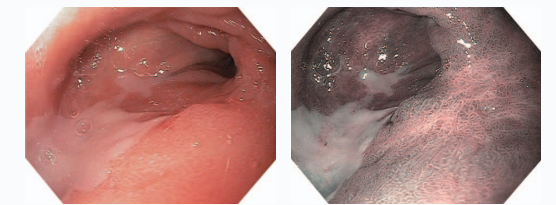


#### ■ HDTV compatibility

Thanks to an HDTV-compatible CCD that delivers clear, sharp images rich in detail, the GIF-2TH180 achieves today's highest level of endoscopic image quality. The dramatic increase in image information made possible by HDTV supports accurate diagnosis and treatment.

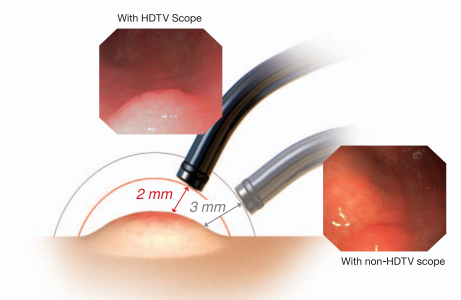
#### ■ NBI capability

The incorporation of Olympus's acclaimed image enhancement technology, Narrow Band Imaging™ offers even more observation flexibility. Combining NBI with the exceptional HDTV image quality enhances the visibility of microvessels and delicate tissue structures.



#### ■ Close Focus for detailed observation

A close-up image can be obtained simply by moving the scope tip close to the site (as close as 2 mm). The combination of the HDTV-compatible CCD's enhanced imaging together with the optical system's extended depth of field ensures that focus remains clear and sharp, with no need for electronic magnification.



**Main Features**

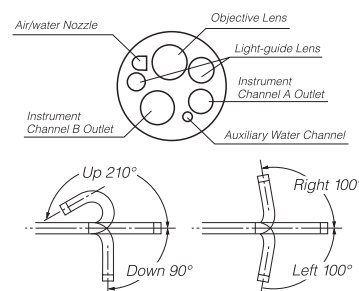
- Dual channel design expands endoscopic treatment possibilities with a 3.7 mm diameter channel and a 2.8 mm diameter channel, allowing the simultaneous use of two endotherapy accessories or the use of one channel for an endotherapy accessory and the other for suction.
- HDTV-compatible CCD chip delivers the sharpest possible images, helping physicians provide accurate screenings and diagnoses.
- Close Focus for detailed observation without electronic magnification.
- Narrow Band Imaging™ combined with HDTV and Close Focus enhances observation of capillary and mucosal structures.
- Distal end diameter measuring 12.2 mm — a decrease of 1mm from the predecessor — while the insertion tube measures 12.6 mm across.
- When used in combination with our dedicated flushing pump, an auxiliary water function is available, providing one-touch flushing for a continuously clear view. The water is pumped from around the 6 o'clock position in the field of view, assuring a better overall view and easier device manipulation.

- Four-way angulation (210° up, 90° down, and 100° right/left) enables comprehensive examination of the upper gastrointestinal tract.
- Extra-wide 140° field of view enables observation of a wide area.
- Ergonomically designed grip enhances scope maneuverability, while easy-to-access knobs and user-selectable switches improve operability.
- Scope ID function stores individual scope information in the built-in memory chip and displays it on the monitor, facilitating endoscopy suite management.



**Specifications**

Optical System	Field of view	140°
	Direction of view	Forward viewing
	Depth of field	2 to 100 mm
Distal End	Outer diameter	12.2 mm
Insertion Tube	Outer diameter	12.6 mm
Bending Section	Angulation range	Up 210°, Down 90°, Right 100°, Left 100°
Working Length		1030 mm
Total Length		1350 mm
Instrument Channel	Inner diameter	A: 2.8 mm, B: 3.7 mm
	Minimum visible distance	A: 3 mm from the distal end B: 5 mm from the distal end
	Endotherapy accessory entrance/exit position in field of view	



Specifications, design and accessories are subject to change without any notice or obligation on the part of the manufacturer.